

# BUSH FIRE INFORMATION

## COMMUNITY NEWSLETTER

### **Information on fire activity in the Hawkesbury area (Gospers Mountain Bush Fire) Issued at 15 November 2019 at 1300**

#### **Situation**

The Gospers Mountain bushfire continues to actively burn to the South and East in the Wollemi and Yengo National Parks. The fire is currently 82,500 hectares in size.

NSW Rural Fire Service (NSWRFS), Country Fire Authority (CFA) and National Parks & Wildlife Service (NPWS) fire fighters continue to work to contain the fire using offensive and defensive strategies. Heavy plant including dozers and aircraft continue to assist in the containment strategy.

Smoke and Fire activity will be visible for residents that live in the northern areas of the Hills, and Hornsby LGAs as well as the western areas of the Central Coast LGA. This is due to increased fire activity today and back burning operations over the weekend.

Planned back burning is due to commence tonight at Webbs Creek and will proceed over the weekend to Colo Heights along Wheelbarrow Ridge Road.

Community meetings have been arranged and will be hosted by the NSWRFS. The following locations are:

- Wisemans Ferry Park – Saturday 16 Nov 19 at 12 (noon)
- Spencer RFS Station Community Hall – Saturday 16 Nov 19 at 10am
- Kulnurra Memorial Hall – Saturday 16 Nov 19 at 12.30pm
- Yarramalong RFS Station – Saturday 16 Nov at 2.30pm
- Wendoree Park RFS Station – Sunday 17 Nov at 12pm (noon)
- Calga / Mt White RFS Station – Sunday 17 Nov 2019 at 2.00pm.

Deteriorating weather is forecast for later today 15 Nov and again early next week, Westerley winds will dominate this afternoon before a southerly change moves through the fire ground early Saturday morning.

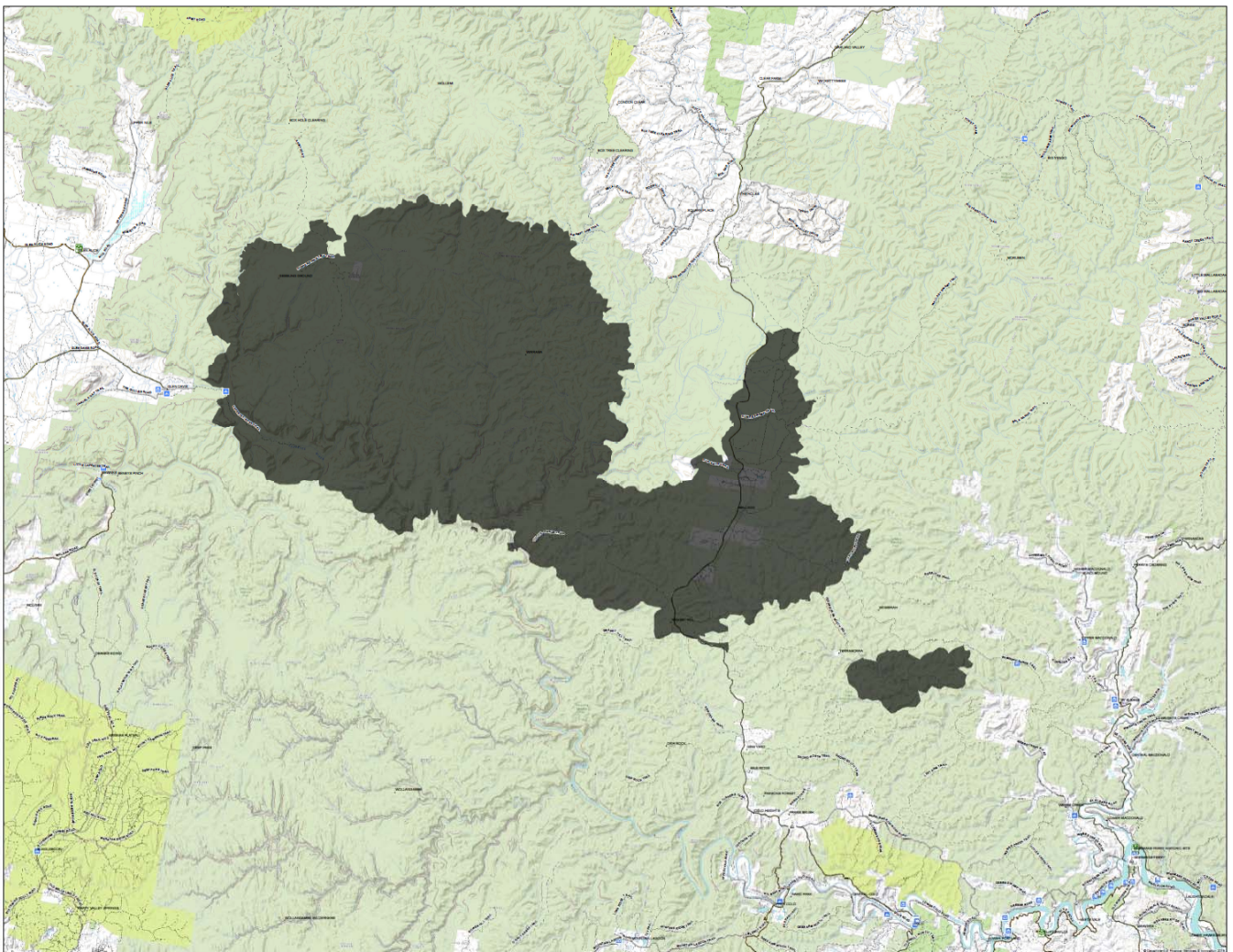
#### **Advice**

- This newsletter is designed to give you an update on the fires progression and to encourage all to keep up to date with the current fire activity.
- We also encourage you over the course of the next few days to do what you can to best prepare your properties, family, pets and livestock and enact your Bush Fire Survival Plan should fire spread into other areas.
- Be vigilant over the following days and monitor fire activity.
- If you see unattended fire call Triple Zero 000.

**Stay up to date at [www.rfs.nsw.gov.au](http://www.rfs.nsw.gov.au) or by calling 1800 NSW RFS (1800 679 737)**

## **Information**

- Updates on fire activity are also available at [www.rfs.nsw.gov.au](http://www.rfs.nsw.gov.au) or by calling call 1800 NSW RFS (1800 679 737) or via the Fires Near Me app.
- Find out the latest Fire Danger Rating in your area at [www.rfs.nsw.gov.au](http://www.rfs.nsw.gov.au) or by calling 1800 NSW RFS (1800 679 737).
- For information on road conditions or closures, please call the NSW RMS on 132 213 or check [www.livetraffic.com](http://www.livetraffic.com). Remember roads may be closed without warning.
- For information on closures of National Parks associated with this fire, please visit [www.npws.nsw.gov.au](http://www.npws.nsw.gov.au)
- **If you need to report a new fire or require urgent assistance, dial Triple Zero (000).**



Issued by the Incident Management Team on behalf of the Commissioner of the NSW Rural Fire Service.